

# UNIVERSE<sup>®</sup> 8050 "CONCEALED FASTENER" - TRESPA<sup>®</sup> METEON

## PROPERTIES MATERIAL AND SYSTEM

TRESPA COLORS:  
SEE COLOR CHARTS  
LIGHT NEUTRALS  
MIDTONES  
DARK NEUTRALS  
ACCENT COLORS  
METALLICS  
WOOD DECOR  
NATURALS

SURFACE STRUCTURE:  
ST = SATIN \*\*  
RT = ROCK  
GL = GLOSS

QUALITIES:  
FIRE RETARDANT (FR) / BLACK CORE

PANEL SIZES \*\*\*:  
143" x 73"  
120" x 60"  
100" x 73"

THICKNESSES:  
3/8" (10mm)  
1/2" (13mm)

\*\* SATIN IS A FINE SURFACE STRUCTURE WITH A SILK GLOSS.  
\*\*\* NOT ALL COLORS AND TEXTURES ARE AVAILABLE IN ALL SIZES.

## FIXING AND EDGE DISTANCE

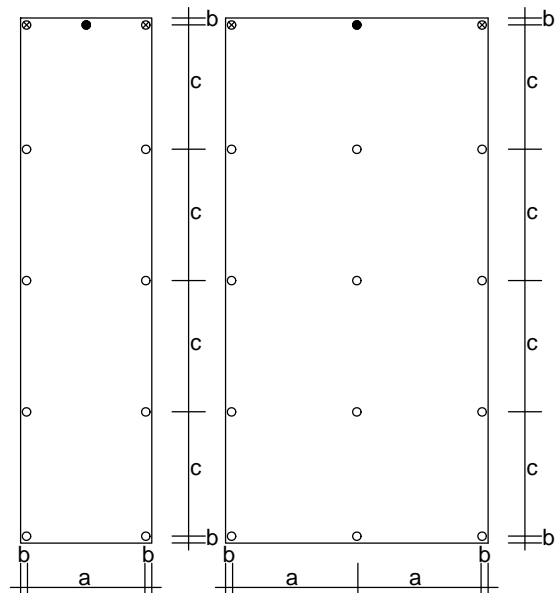
THE SUBFRAME SHOULD CONSIST OF HORIZONTAL PROFILES WHICH ARE FIXED TO THE BUILDING STRUCTURE

### GENERAL

JOINTS: AT LEAST 3/8" (10mm)  
PANEL THICKNESS: 3/8" (10mm) OR 1/2" (13mm)

### FIXING CENTERS AND EDGE CLEARANCES

a = HORIZONTAL FIXING CENTER (SEE TABLE)  
b = EDGE CLEARANCE (3 1/4" STANDARD)  
MAXIMUM 10 x PANEL THICKNESS  
c = VERTICAL FIXING CENTER (SEE TABLE)  
⊗ = ADJUSTMENT POINT  
● = PANEL FIXING POINT  
○ = SLIDING POINT



### MAXIMUM FIXING CENTERS

TWO FIXINGS IN ONE DIRECTION  
THREE OR MORE FIXINGS IN ONE DIRECTION

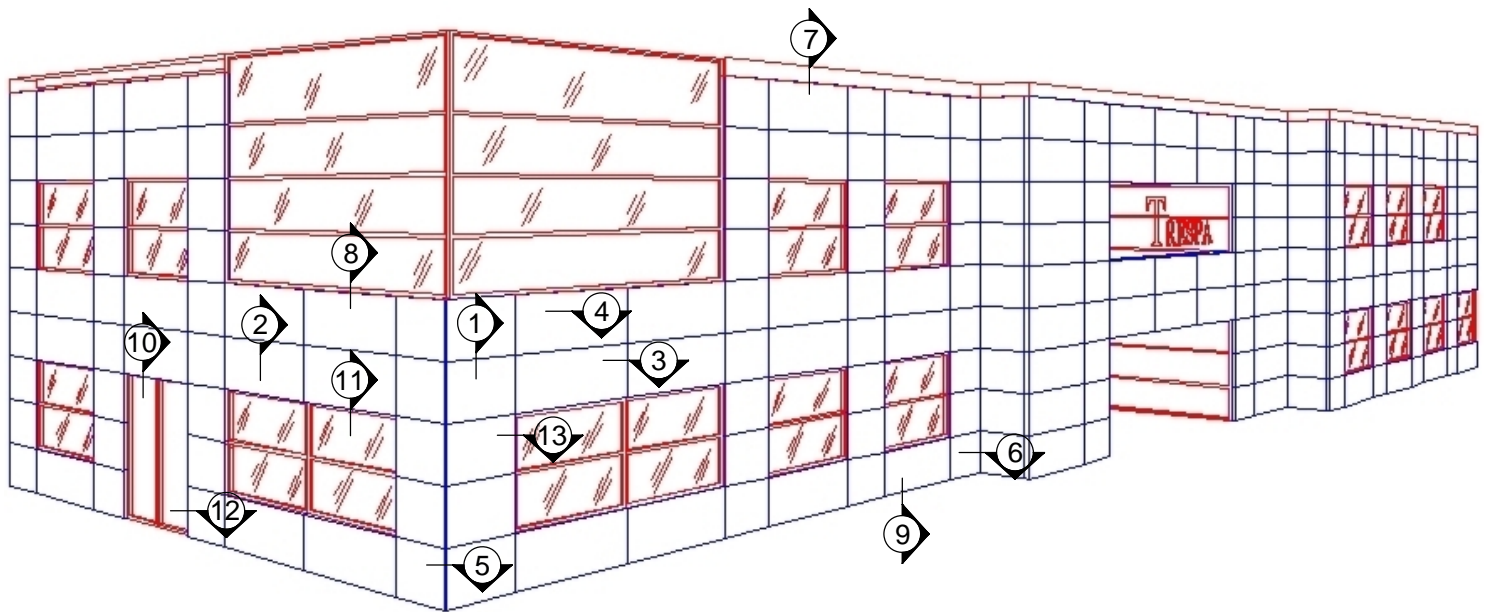
### PANEL THICKNESS

3/8" (10mm)	1/2" (13mm)
30" (750mm)	38" (950mm)
36" (900mm)	48" (1,200mm)

SEE INDIVIDUAL DETAIL SHEETS FOLLOWING THIS PAGE

UNIVERSE CORPORATION - WWW.UNIVERSECORP.COM

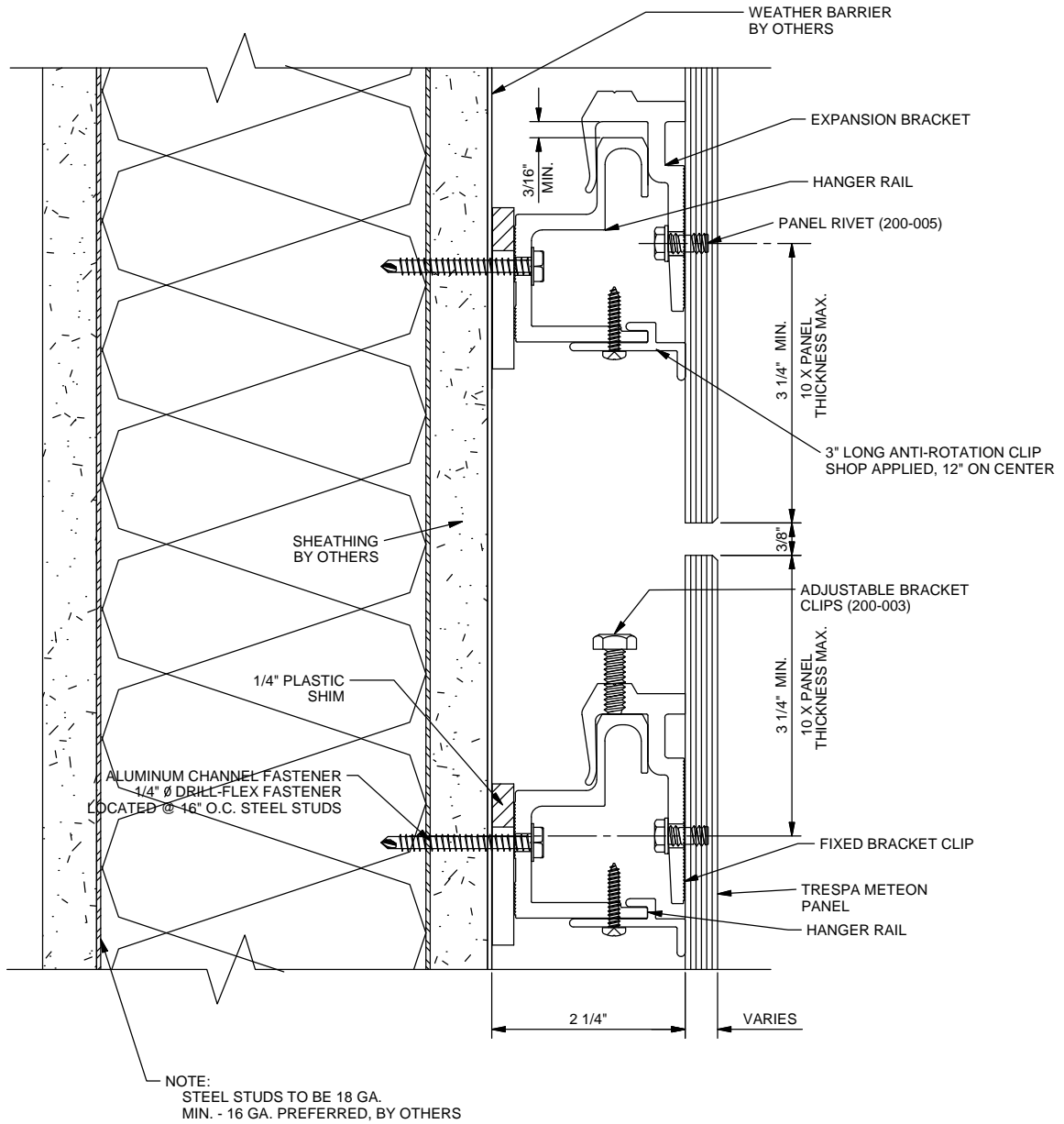
UNIVERSE<sup>®</sup> 8050 "CONCEALED FASTENER" - TRESPA<sup>®</sup> METEON



BUILDING ELEVATION

UNIVERSE CORPORATION - [WWW.UNIVERSECORP.COM](http://WWW.UNIVERSECORP.COM)

# UNIVERSE<sup>®</sup> 8050 "CONCEALED FASTENER" - TRESPA<sup>®</sup> METEON

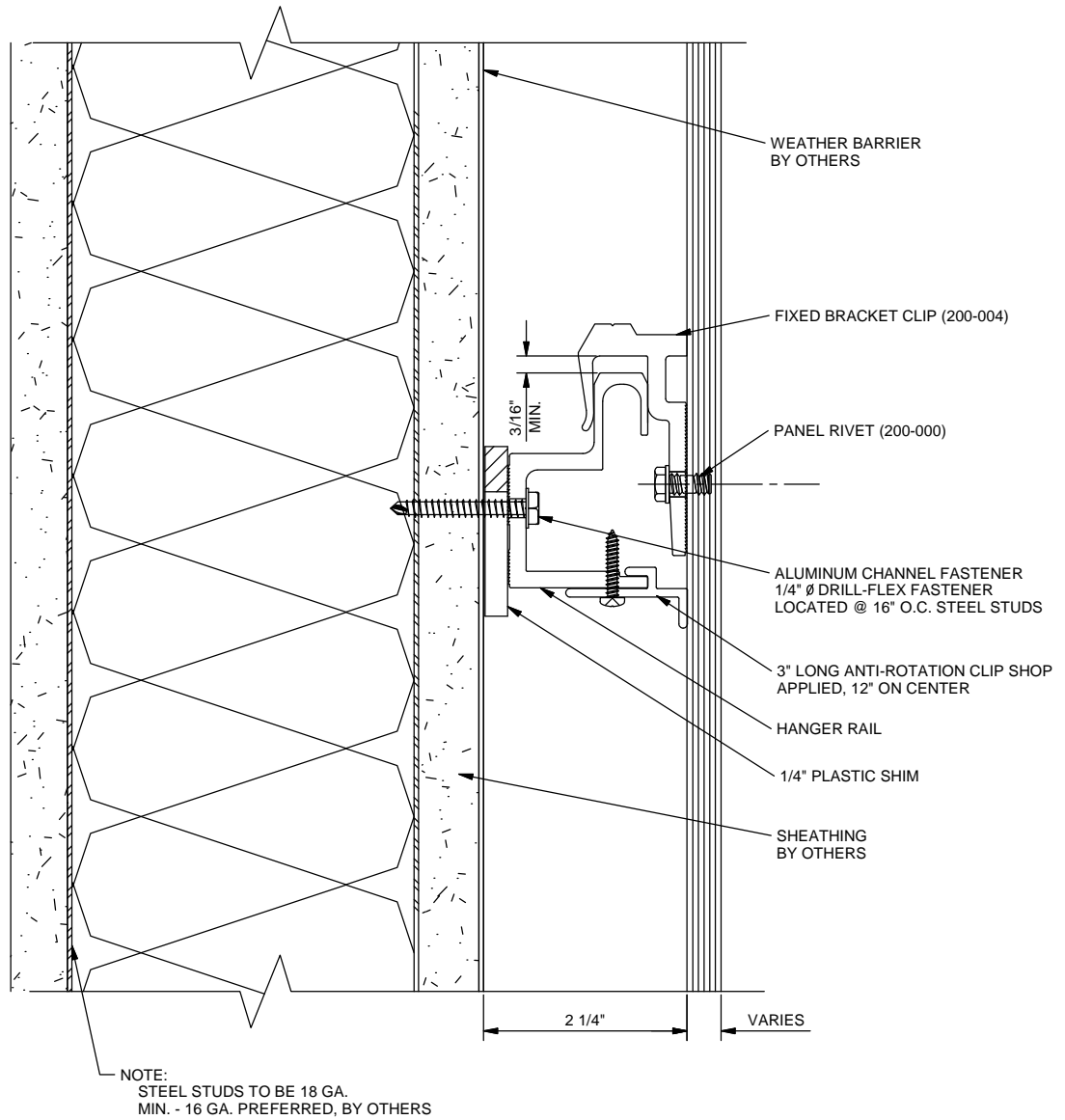


1

## HORIZONTAL PANEL JOINT

NOT TO SCALE

# UNIVERSE<sup>®</sup> 8050 "CONCEALED FASTENER" - TRESPA<sup>®</sup> METEON

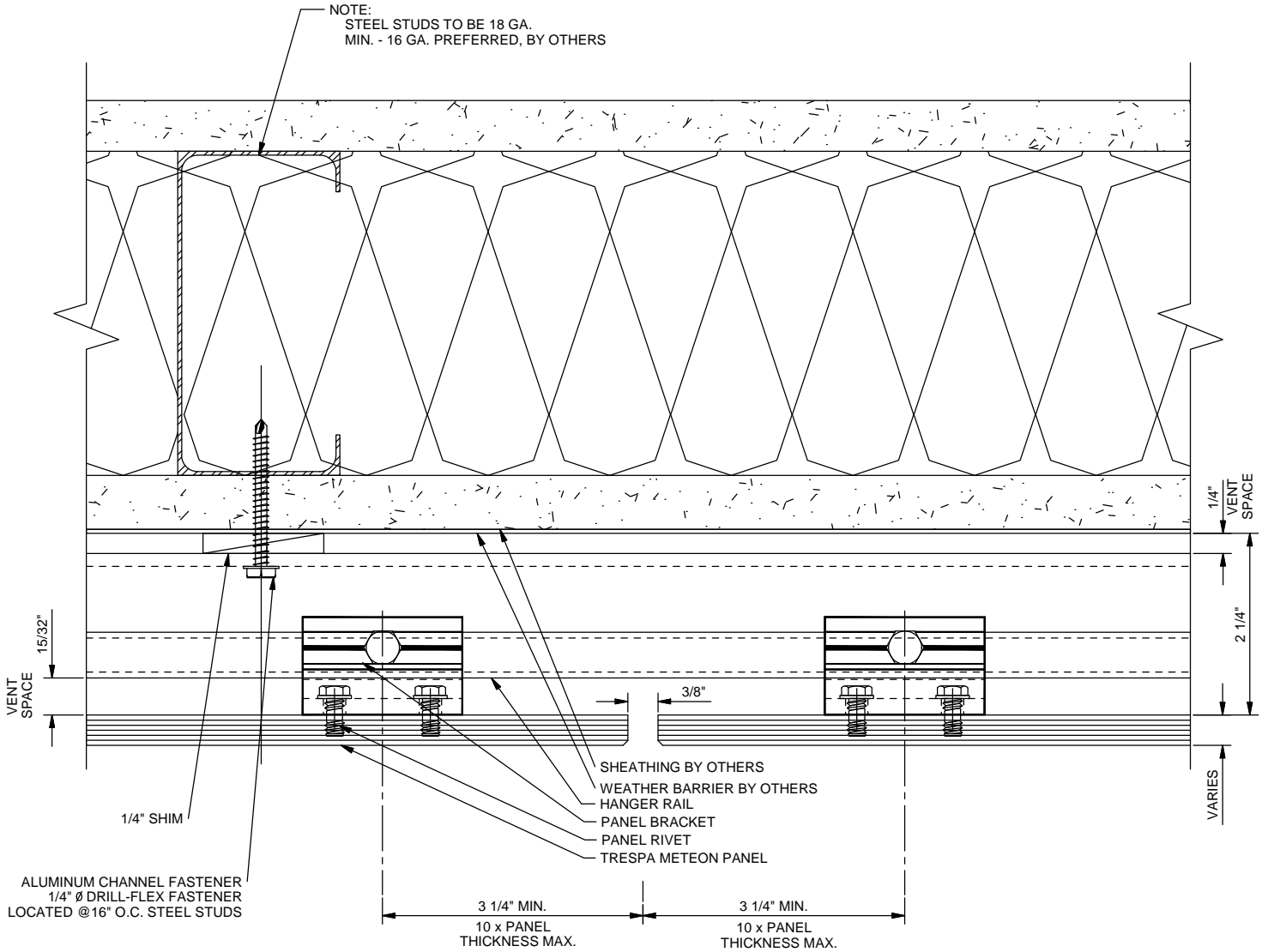


2

MID PANEL

NOT TO SCALE

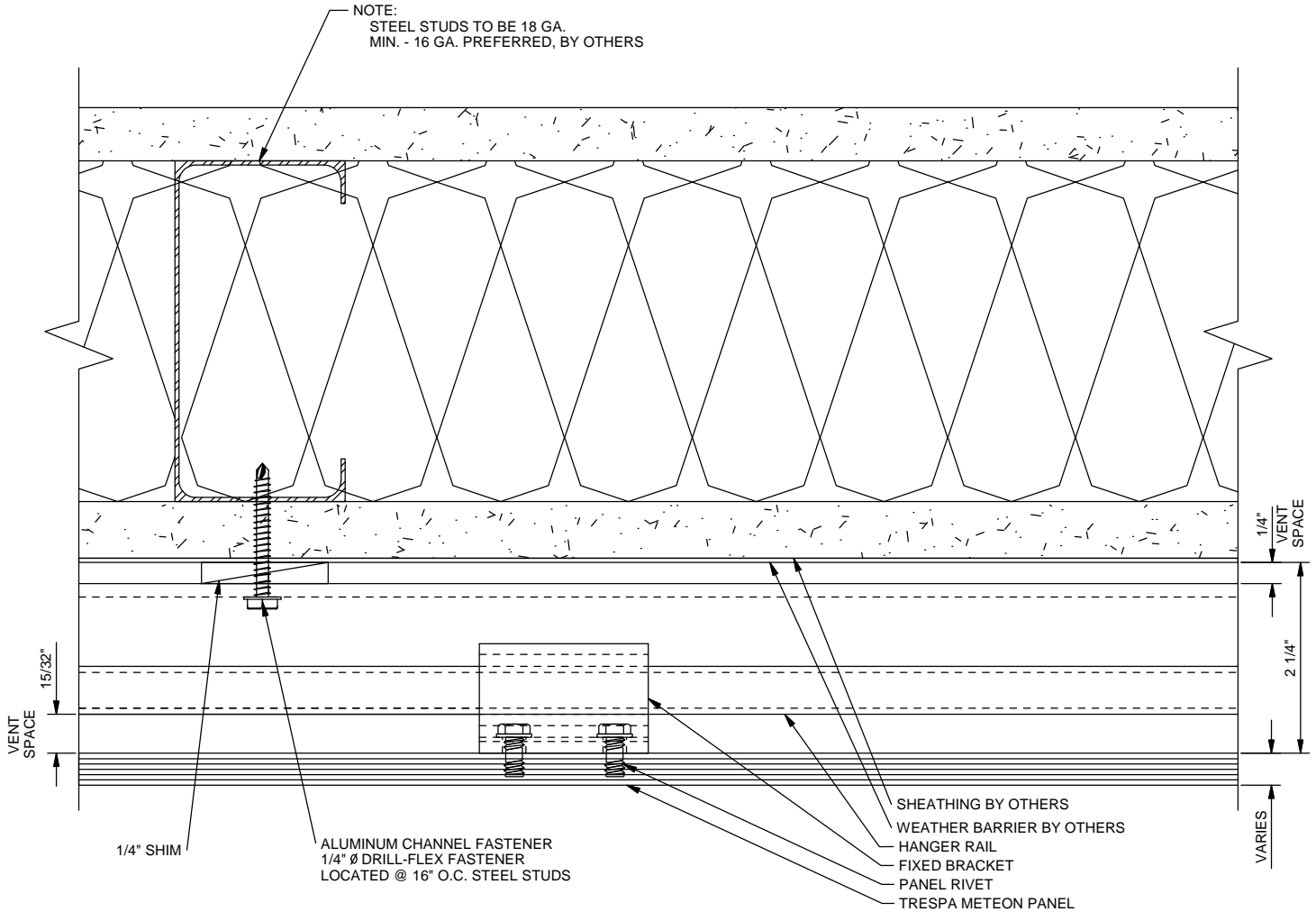
# UNIVERSE<sup>®</sup> 8050 "CONCEALED FASTENER" - TRESPA<sup>®</sup> METEON



## 3 VERTICAL PANEL JOINT

NOT TO SCALE

# UNIVERSE<sup>®</sup> 8050 "CONCEALED FASTENER" - TRESPA<sup>®</sup> METEON

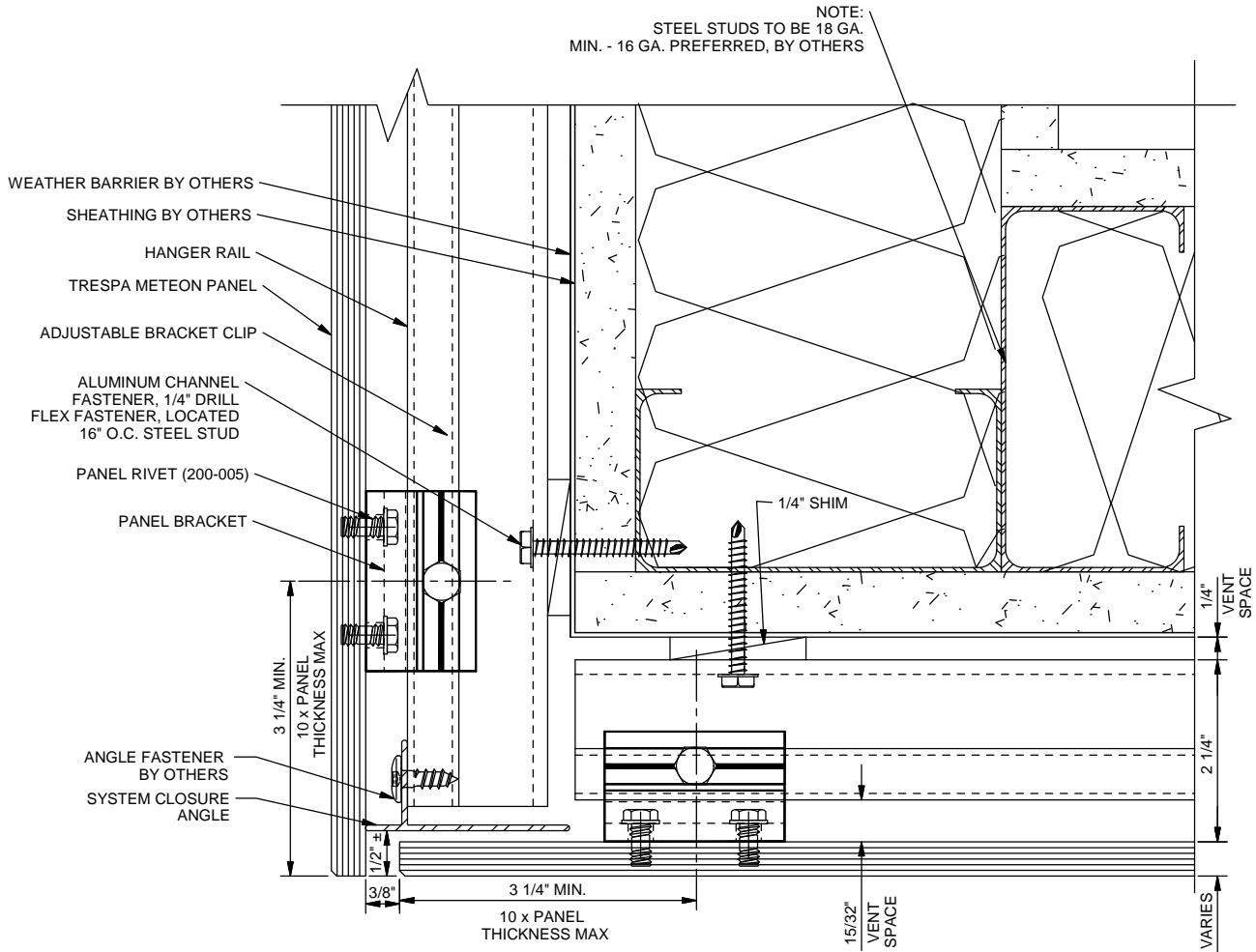


4

MID-PANEL

NOT TO SCALE

# UNIVERSE<sup>®</sup> 8050 "CONCEALED FASTENER" - TRESPA<sup>®</sup> METEON

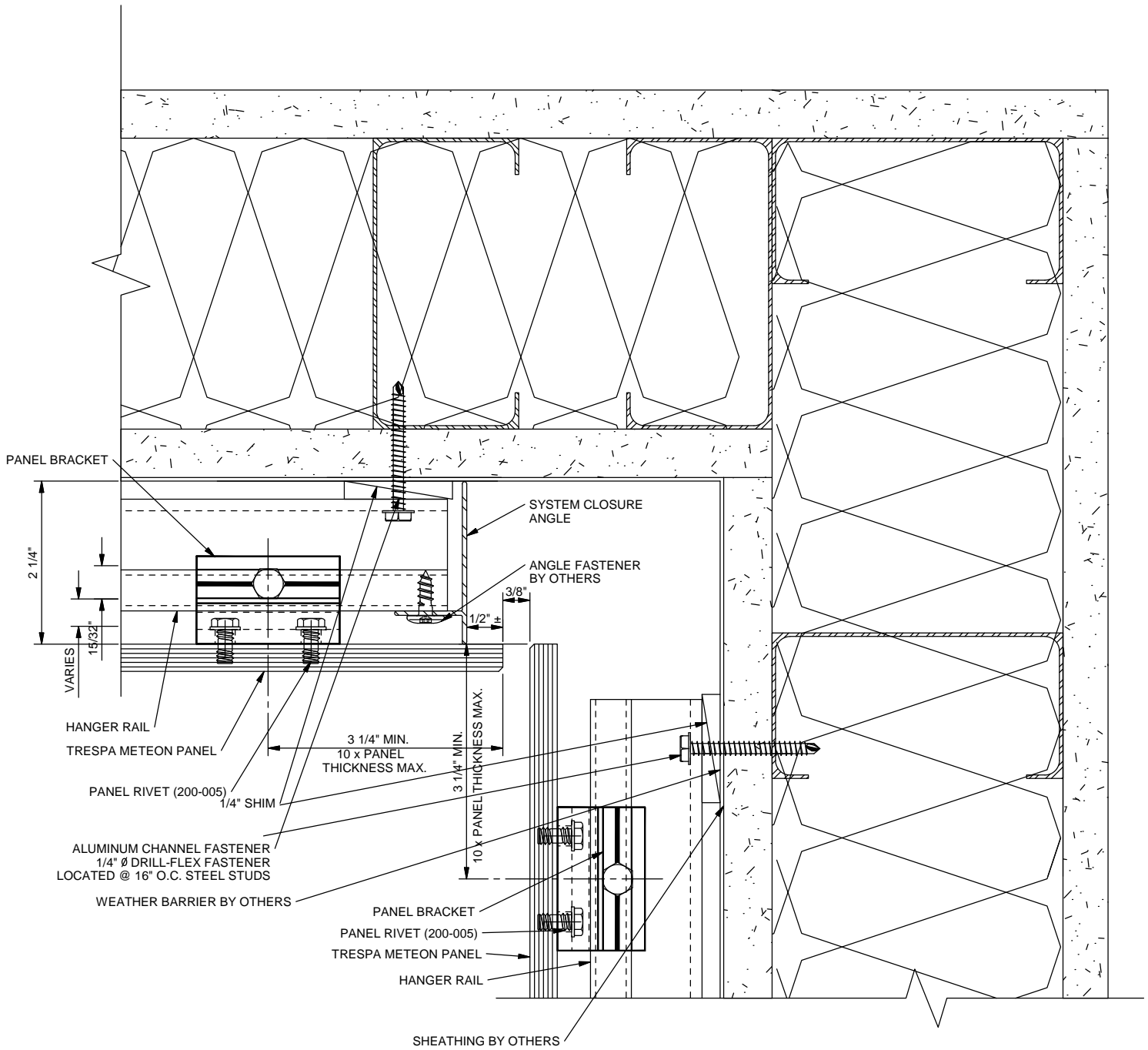


5

OUTSIDE CORNER

NOT TO SCALE

# UNIVERSE<sup>®</sup> 8050 "CONCEALED FASTENER" - TRESPA<sup>®</sup> METEON

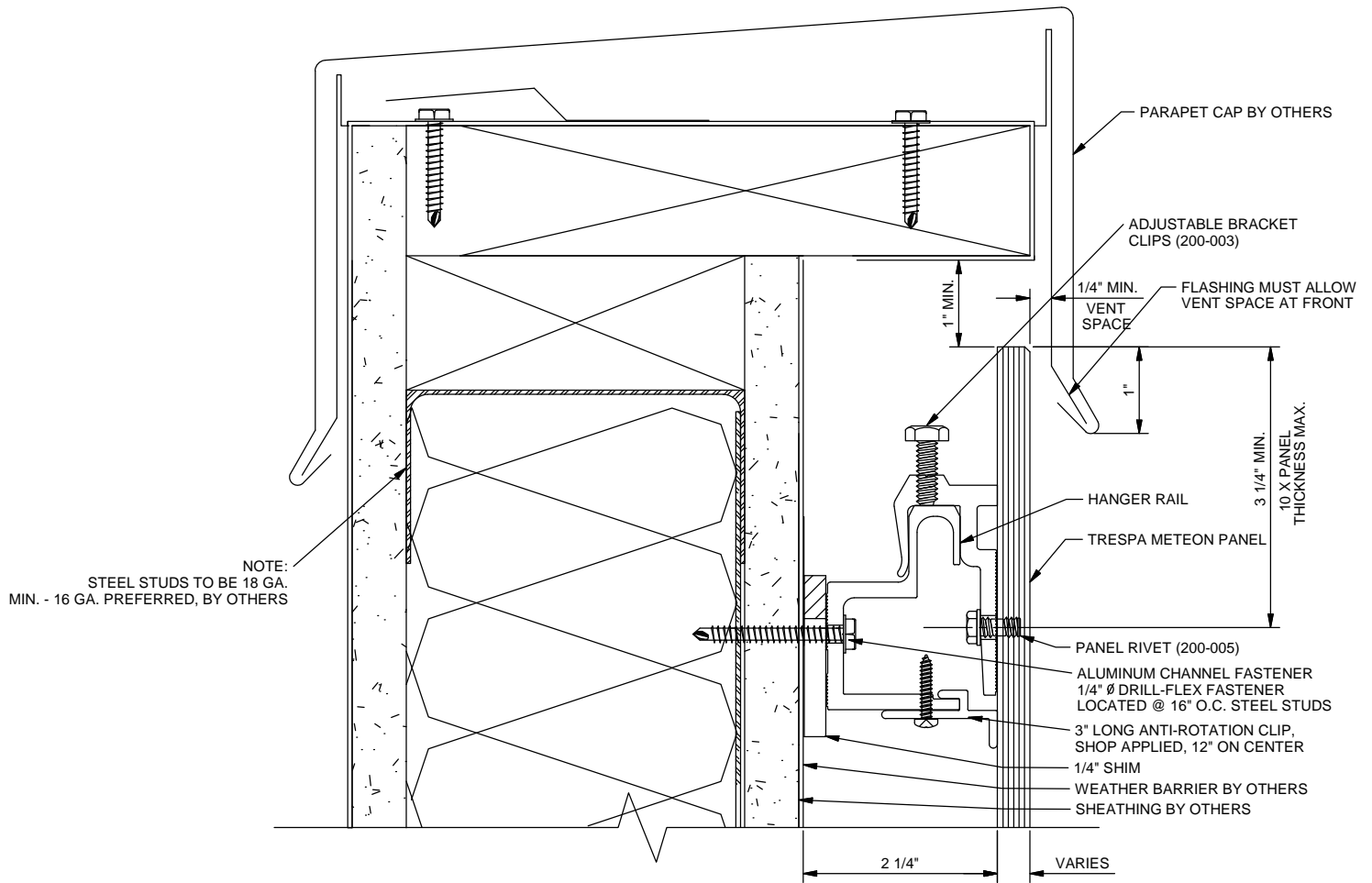


6

INSIDE CORNER

NOT TO SCALE

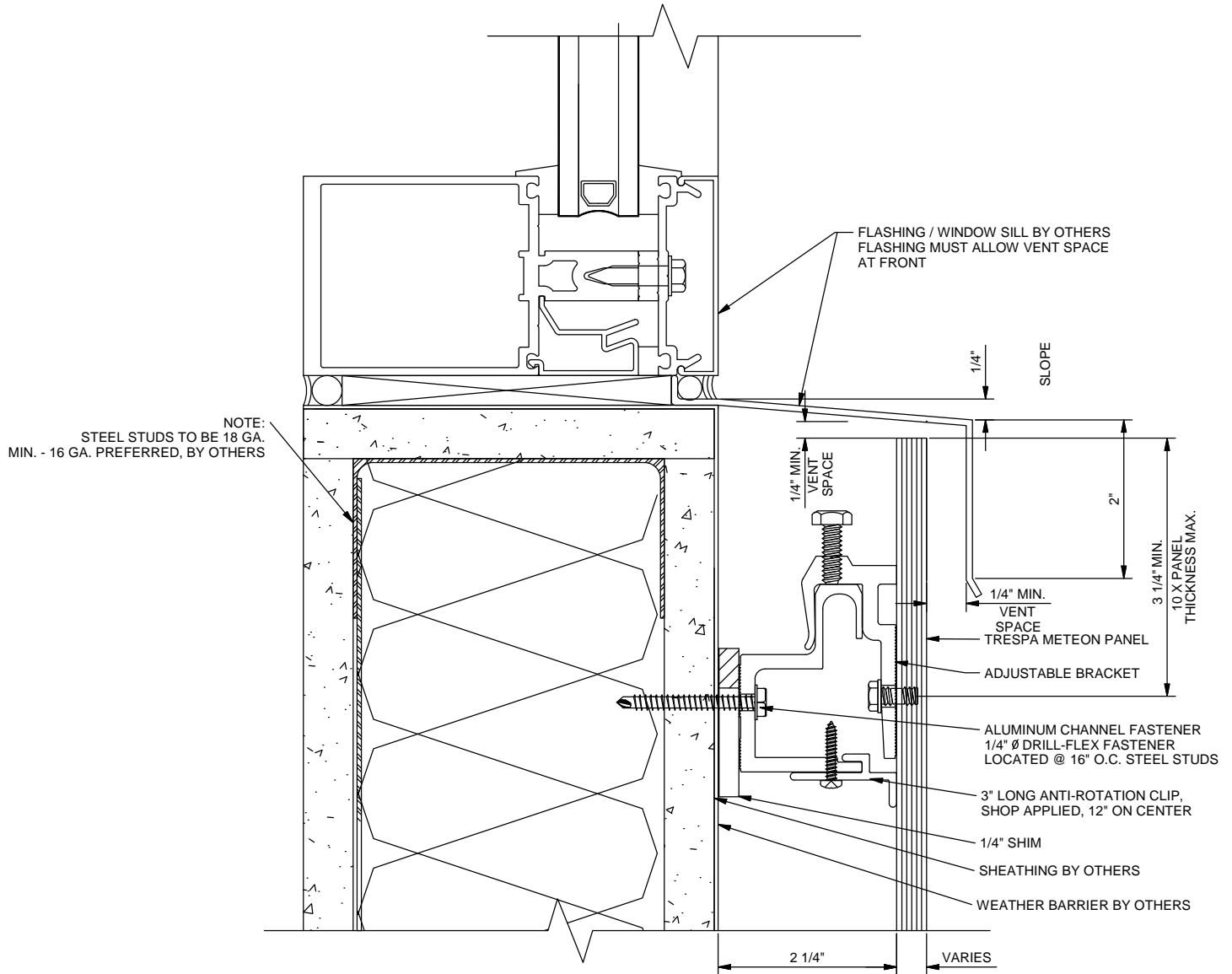
# UNIVERSE<sup>®</sup> 8050 "CONCEALED FASTENER" - TRESPA<sup>®</sup> METEON



## 7 PARAPET CAP

NOT TO SCALE

# UNIVERSE<sup>®</sup> 8050 "CONCEALED FASTENER" - TRESPA<sup>®</sup> METEON

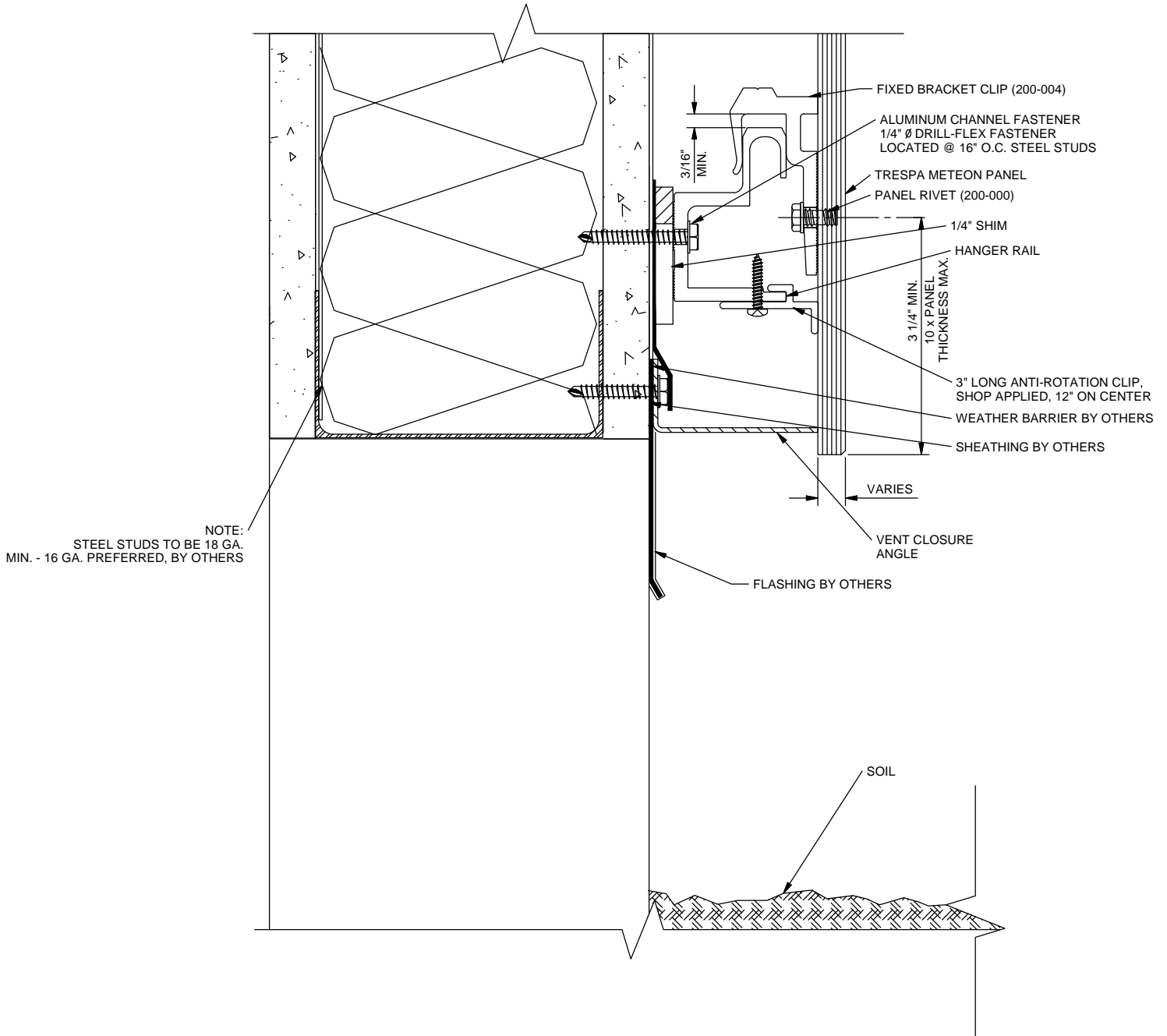


8

## WINDOW SILL

NOT TO SCALE

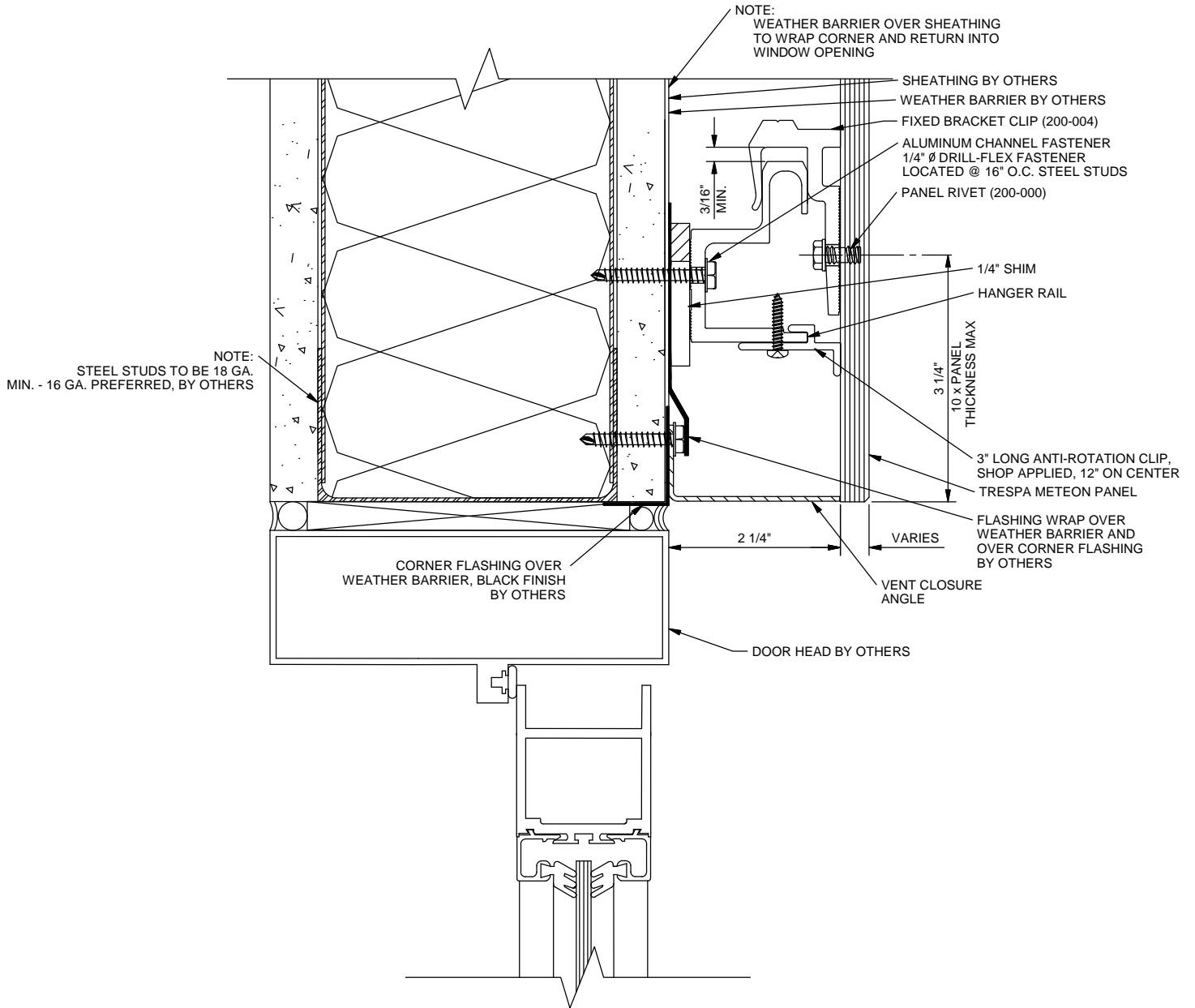
# UNIVERSE<sup>®</sup> 8050 "CONCEALED FASTENER" - TRESPA<sup>®</sup> METEON



**9** FLOOR

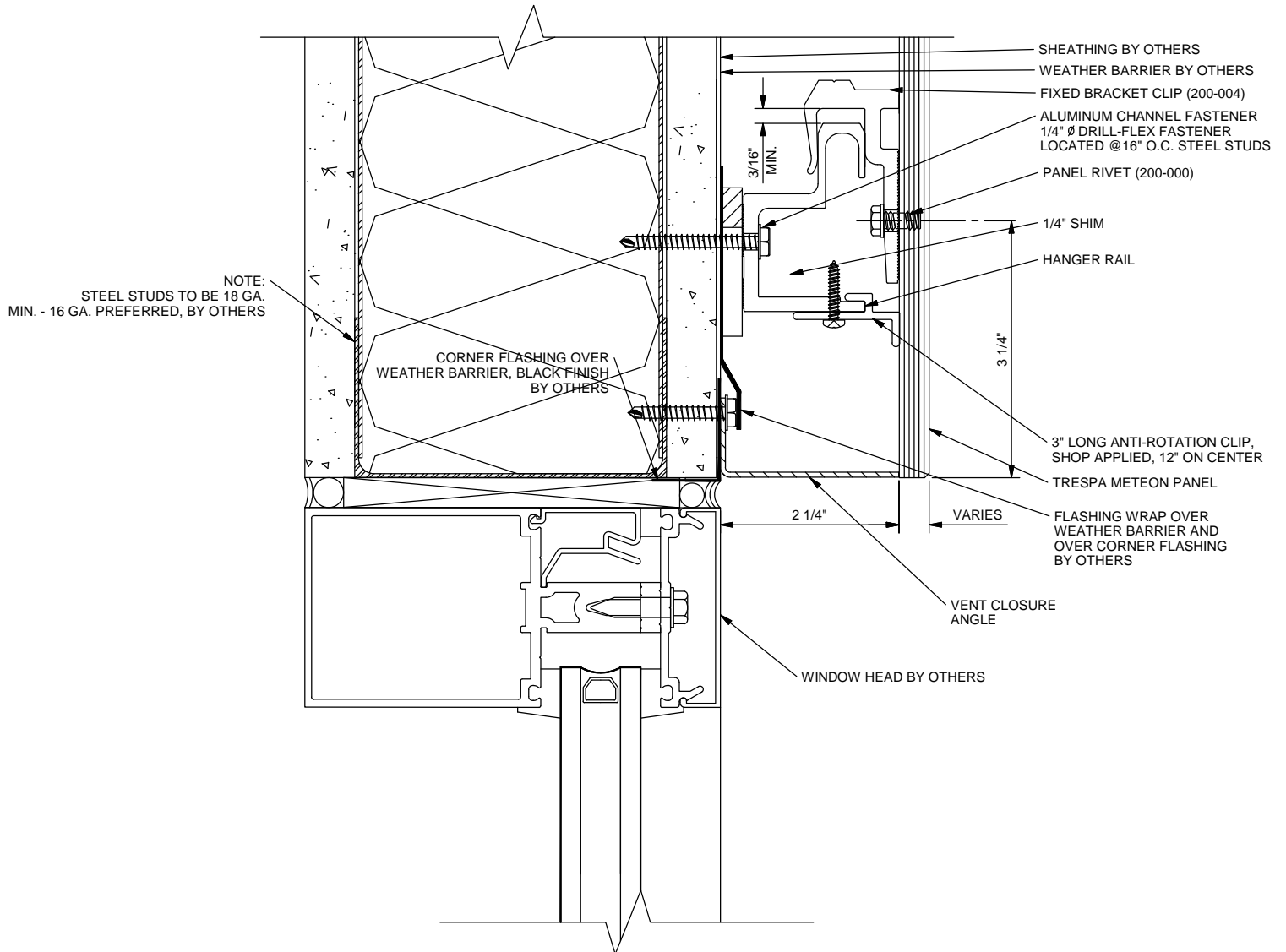
NOT TO SCALE

# UNIVERSE<sup>®</sup> 8050 "CONCEALED FASTENER" - TRESPA<sup>®</sup> METEON



**10** DOOR HEAD  
 NOT TO SCALE

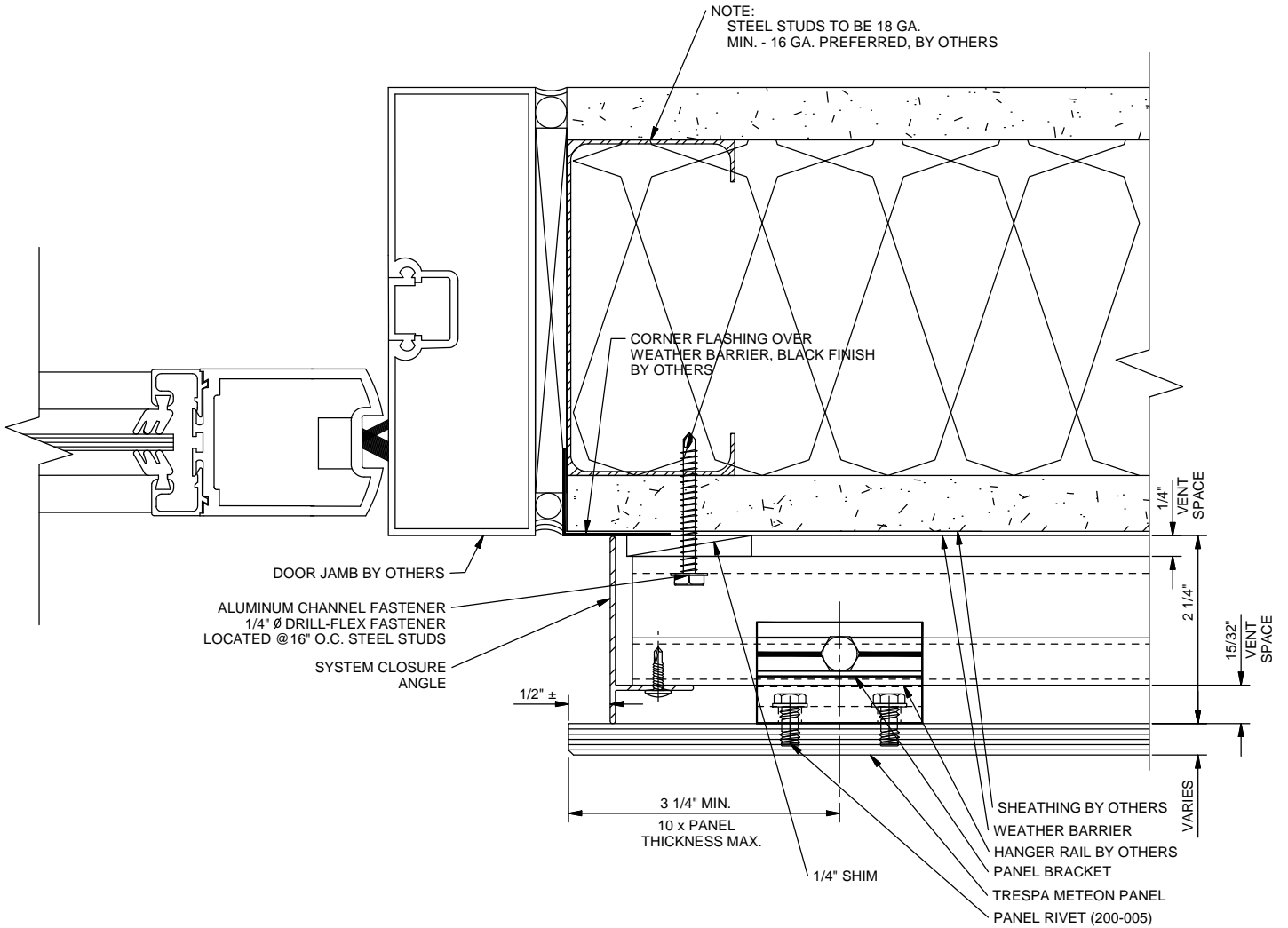
# UNIVERSE® 8050 "CONCEALED FASTENER" TRESPA® METEON



## 11 WINDOW HEAD

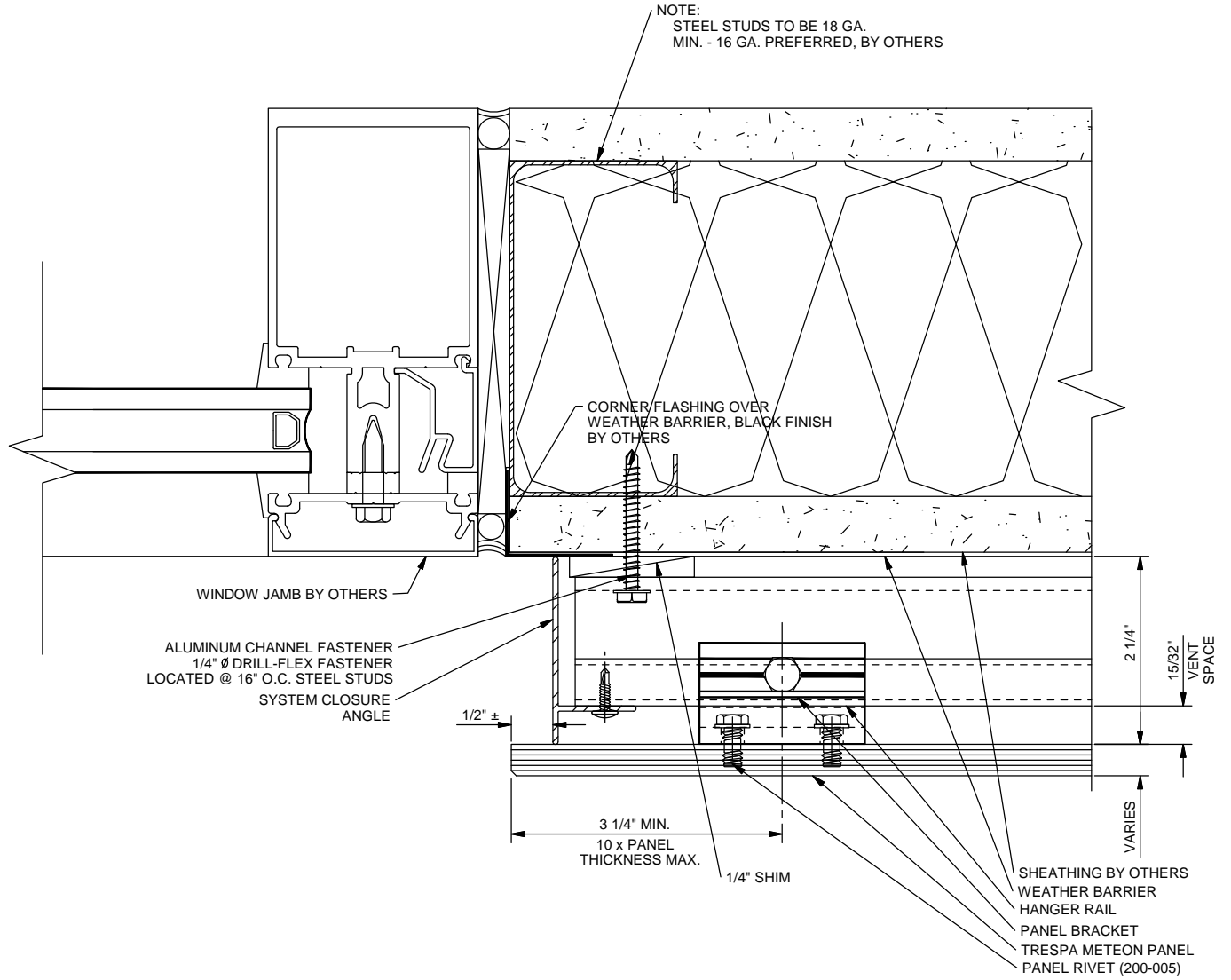
NOT TO SCALE

# UNIVERSE<sup>®</sup> 8050 "CONCEALED FASTENER" - TRESPA<sup>®</sup> METEON



**12** DOOR JAMB  
NOT TO SCALE

# UNIVERSE<sup>®</sup> 8050 "CONCEALED FASTENER" - TRESPA<sup>®</sup> METEON



13

WINDOW JAMB

NOT TO SCALE